

State of Wyoming Corner Record

(In compliance with the *CORNER PERPETUATION AND FILING ACT*, Wyoming Statutes, 1997, Section 33-29-140, et. seq., and the Rules and Regulations of the Board of Registration for Professional Engineers and Professional Land Surveyors)

Reverse side of this form may be used if more space is needed.

Record of original survey and citation of source of historical information (if corner is lost or obliterated). Description of corner monumentation evidence found and/or monument and accessories established to perpetuate the location of this corner. Sketch of relative location of monument, accessories, and reference points with course and distance to adjacent corner(s) (if determined in this survey). Method and rationale for reestablishment of lost or obliterated corner.

G.L.O. Record: *U.S. Deputy Surveyors, J.M. Fowler and A. W. Fahringer, November 14, 1874; From the closing cor. to Secs. 21 & 22, I proceed to the cor. to secs. 20 & 21, 27 & 28 from which cor. I run N. on a true line between Secs 20 & 21. Var 15° E 68.40 Chains... Intersect the N boundary of Colorado Ter. at a point 26 chains + 40 lks E. of the 45 mile post at which point I set a Boulder stone 14 x 10 x 6, 10 in deep. Marked 4 notches E & 2 notches W. CB on N side for closing Cor. to secs. 20 & 21.*

Found: A 14 x 8 x 6 ins. grey colored granite stone, 3 ft. south of a east-west, 8 bare wire, wood post buffalo fence of the Terry Bison Ranch. Stone was marked with 4 notches on the East edge and 2 notches on the West edge and found to be on the intersection of the Wyoming-Colorado state line.

Set: An aluminum post, 30 ins. long, 2 ½ ins. diam., 28 ins. in the ground, with a 3 ¼ ins. aluminum cap marked as noted below. Also buried a 1 x 1 x 2 ins. orange fluorescent magnetic module in the bottom of the monument hole. Buried the original monument upside down along the south edge of the remonumented corner point as a memorial. Set a carsonite witness marker post 3 ft. north in the east-west buffalo wire fence line.

Aluminum Cap Markings
T12N R67W

1	CC
9	S20 S21 WYO
9	S20 S22 COLO
9	CC

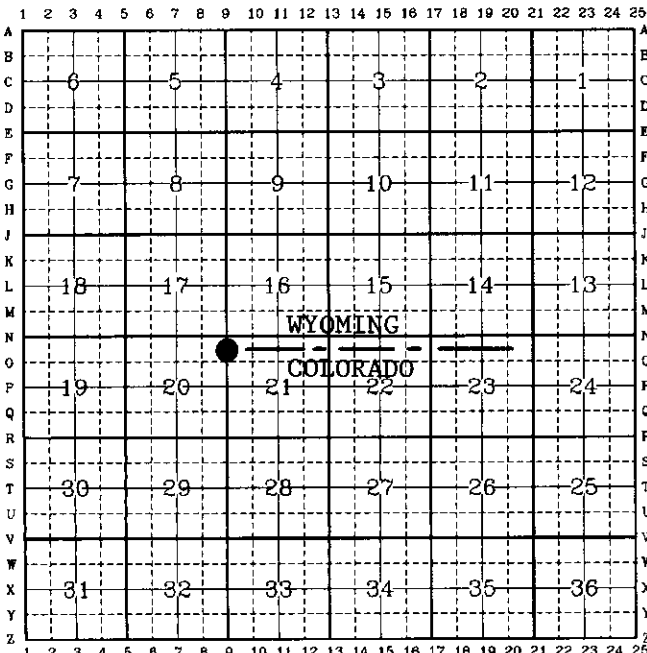
P.L.S. 2927

See back of this sheet for sketch of survey and measurements made to other found, searched for and/or set monuments.

Date of Field Work: March 9, 1999

Office Reference: A.V.I., p.c. Job No. 2-2085C

CROSS INDEX DIAGRAM

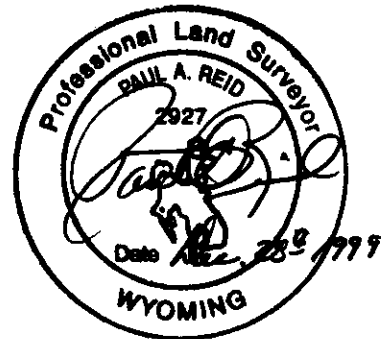
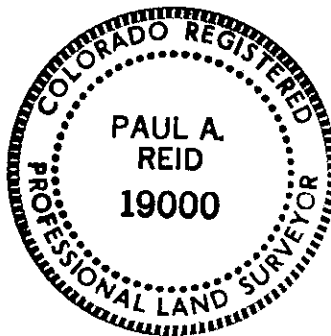


Firm/Agency, Address
Paul A. Reid, P.L.S.
A.V.I., p.c.
2035 Westland Road
Cheyenne, WY 82001

Telephone Number:
(307) 637-6017

This corner record was prepared by me or under my direction and supervision.

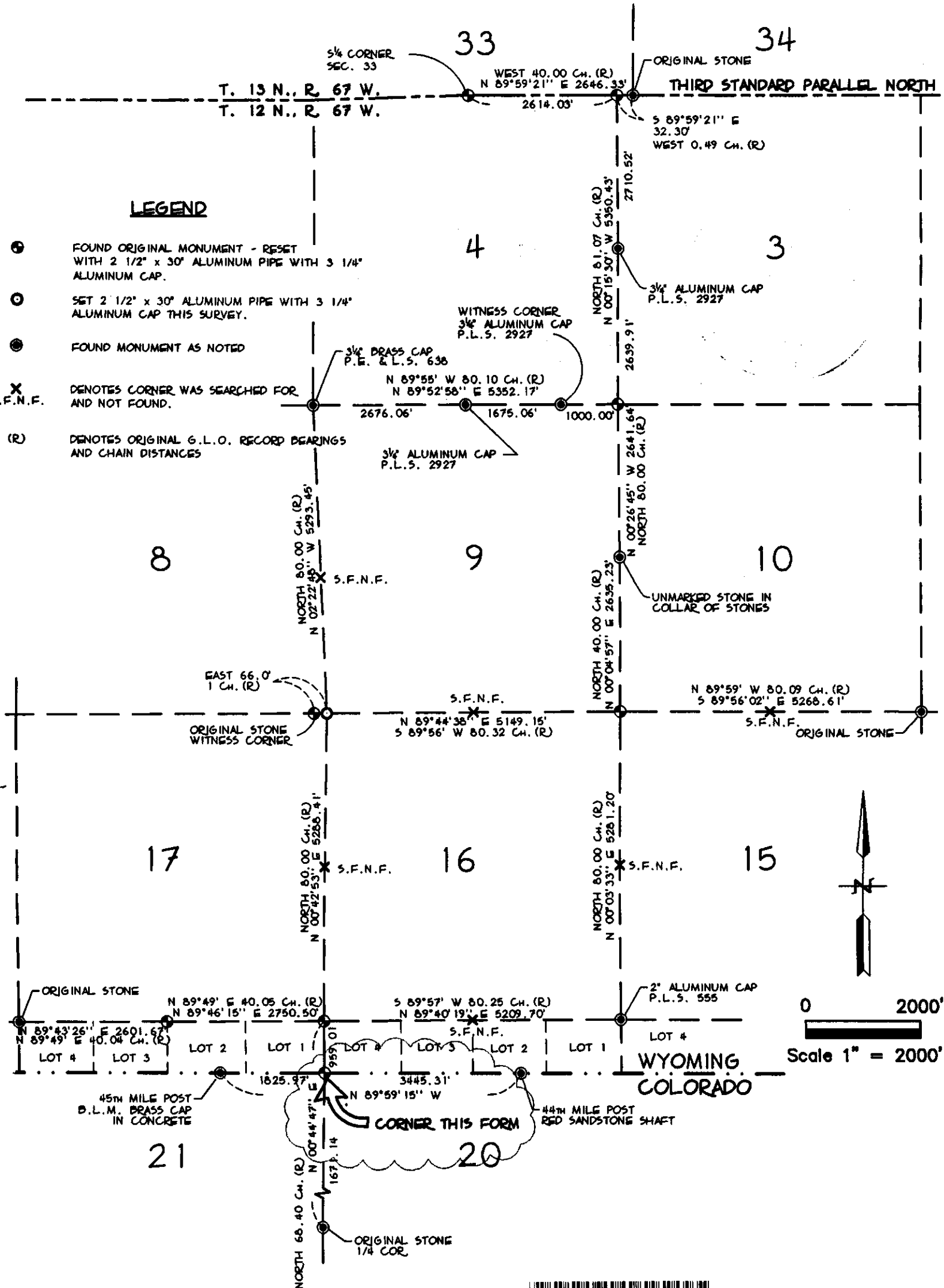
SEAL & SIGNATURE



Corner Name: CC
SBRPEPLS/PLSW:March 1994

Section: 20/21

T.12N., R.67W.; 6th P.M. Cross-Index No.: Near O-9



RECORDED 12/28/1999 AT 2:12 PM REC# 266409 BK# 1542 PG# 1270
 DEBRA K. LATHROP, CLERK OF LARAMIE COUNTY, WY PAGE 2 OF 2

SKETCH OF SURVEY
 T. 12 N., R. 67 W., 6TH P.M.
 LARAMIE COUNTY, WYOMING